

**VE Cam**  
Compact digital  
inspection system



# EFFICIENT AND ACCURATE INSPECTION. COMPACT FOOTPRINT. GETTING THE JOB DONE.

Designed for productivity, the compact VE Cam 50 & VE Cam 80 offer the power, speed and efficiency of digital imaging in a compact package. Packed with new and established features, VE Cam enables you to do more with maximum space efficiency.

Available with 80mm or 50mm field of view, VE Cam is ideal for many routine inspection tasks. Suitable applications include: electronics, mechanical engineering, plastics, additive manufacturing, and ceramics.



## Digital working efficiency

Digital technology supports immediate information capture and share across teams.



## Intuitive technology

User friendly interface and common functions make digital systems easy to understand and use.



## Wireless viewing

WiFi image mirroring mean colleagues and supervisors can view live images without interrupting workflow.



## Improved decision making

Common viewing capability across teams speeds sample and product validation, adding value and reducing cost through increased efficiency.



Touch screen configuration



## Features for productivity

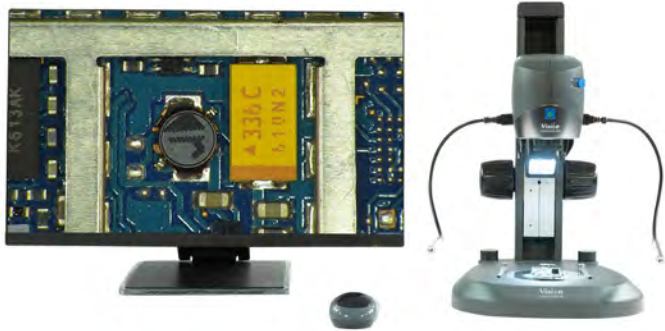
Enhanced productivity features include:

- 10 User programmable presets
  - Users can configure and swiftly recall preferred settings for up to 10 settings, for example image settings and functional grids, time stamp and other options. Saves time when changing subjects and aids consistency between users
- 6 hotkeys for instant one touch access to most commonly used presets
- Configurable interface allows most commonly used settings to be shown direct on the screen. Choose to see the features you need



## Features for viewing quality

- Precise lighting for precise images: Control of the built-in 8-point ring-light direct from the screen and add transmitted, oblique and flexible illumination through a selection of accessories
- Display two magnifications on screen at one time allowing overview and detail view without changes in settings
- Graphical overlays over the image aid speedy assessment of the subject and can be saved as part of the captured image. Addition of an optional time stamp add traceability



## Control as you like

Get the most from the system by controlling it as you need. Intuitive menus can be accessed by mouse, touchscreen, keypad or keyboard with shortcuts configured on a programmable footswitch allowing direct, hands free access to three selectable features.

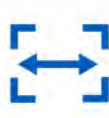
**Multi-language menus:** using English, German, Spanish, French, Italian, Portuguese, Chinese, Japanese, Russian



Wireless screen sharing



Touch screen compatible



Large field of view



Long working distance

10  
presets

10 programmable presets



Grid overlays



Built-in ring light



On-axis imaging



Pan & zoom live images

# TECHNICAL INFORMATION + STAND OPTIONS



**Bench stand**

Optical	VE Cam 50	VE Cam 80
Diagonal FOV	1.9" (50mm)	3.15" (80mm)
Max. FOV (H x V)	1.57" x 1.18" (40mm x 30mm)	2.52" x 1.89" (64mm x 48mm)
Min. magnification*	9.97x	6.23x
Min. FOV (H x V)	0.31" x 0.24" (8mm x 6mm)	0.50" x 0.38" (12.8mm x 9.6mm)
Max. magnification	49.9x	31.15x
Working distance	6.42" (163mm)	5.82" (148mm)
Maximum subject height when mounted to stand		
Bench stand	2.95" (75mm)	3.54" (90mm)
Single arm stand	4.68" (119mm)	5.28" (134mm)

\*using 24" screen



**Single arm stand**



**Double arm stand**

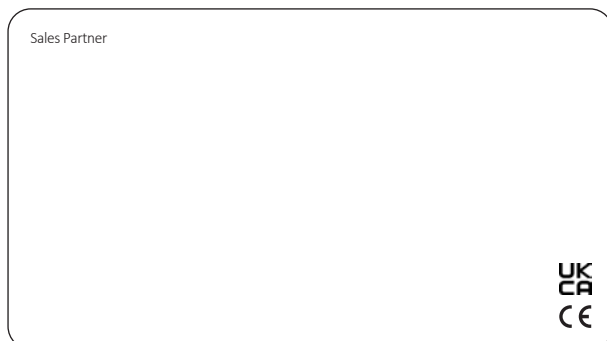


**Articulated arm stand**

## Shared features

WiFi hotspot - screen mirroring, on-screen quick buttons, save images, pan & zoom of live image, replay saved images, pan and zoom of saved image, area magnifier, pinch zoom (mouse pad/touch screen), 10 presets, time stamp, crosshair & colors, grids & colors, exposure options, white balance options.

To see our focused quality, please contact your Vision Engineering branch, local authorized distributor, or visit our website: [visioneng.us](http://visioneng.us)



**Disclaimer** - Vision Engineering Ltd. has a policy of continuous development and reserves the right to change or update, without notice, the design, materials or specification of any products, the information contained within this brochure/datasheet and to discontinue production or distribution of any of the products described. EO&E: Errors and omissions excepted.

**Vision Engineering Ltd.**  
(UK Manufacturing & Commercial)  
The Freeman Building, Galileo Drive, Send, Surrey, GU23 7ER, UK  
T +44 (0) 1483 248300  
E [generalinfo@visioneng.co.uk](mailto:generalinfo@visioneng.co.uk)

**Vision Engineering Ltd.**  
(Central Europe)  
Anton-Pendele-Str. 3, 82275 Emmering, Deutschland  
T +49 (0) 8141 40167-0  
E [info@visioneng.de](mailto:info@visioneng.de)

**Nippon Vision Engineering (Japan)**  
272-2 Saedo-cho, Tsuduki-ku, Yokohama-shi, Kanagawa 224-0054, Japan  
T +81 (45) 935 1117  
E [info@visioneng.jp](mailto:info@visioneng.jp)

**Vision Engineering (India)**  
T +91 (0) 80-5555-33-60  
E [info@visioneng.co.in](mailto:info@visioneng.co.in)

**Vision Engineering (South East Asia)**  
P-03A-20, Impian Meridian, Jalan Subang 1, USJ 1, 47600 Subang Jaya, Selangor Darul Ehsan, Malaysia  
T +604-619 2622  
E [info@visioneng.asia](mailto:info@visioneng.asia)

**Vision Engineering Inc.**  
(NA Manufacturing & Commercial)  
570 Danbury Road, New Milford, CT 06776, USA  
T +1 (860) 355 3776  
E [info@visioneng.com](mailto:info@visioneng.com)

**Vision Engineering Ltd. (Italia)**  
Via G. Paisiello 106 20092 Cinisello Balsamo MI, Italia  
T +39 02 6129 3518  
E [info@visioneng.it](mailto:info@visioneng.it)

**Vision Engineering (China)**  
Room 904B, Building B, No.970, Nanning Road, Xuhui Vanke Center Shanghai, 200235, P.R. China  
T +86 (0) 21 5036 7556  
E [info@visioneng.com.cn](mailto:info@visioneng.com.cn)

**Vision Engineering (Mexico)**  
T 800 099 5325  
E [infomx@visioneng.com](mailto:infomx@visioneng.com)

**Vision Engineering (Latin America)**  
E [infomx@visioneng.com](mailto:infomx@visioneng.com)

**Vision Engineering (Brazil)**  
E [info@visioneng.com.br](mailto:info@visioneng.com.br)

**Vision Engineering Technology Centre**  
16 Technology Drive, Unit 148, Irvine, CA 92618, USA  
T +1 (800) 644 7264 (Toll free)  
E [info@visioneng.com](mailto:info@visioneng.com)

**Vision Engineering Ltd. (France)**  
ZAC de la Tremblaie, Av. de la Tremblaie 91220 Le Plessis Paté, France  
T +33 (0) 160 76 60 00  
E [info@visioneng.fr](mailto:info@visioneng.fr)

**Vision Engineering (Costa Rica) Centro**  
Coyol Innovación y Servicios 50 mts Sur de Riteve Coyol, Alajuela  
T 0.800.0320059  
E [info@visioneng.com.br](mailto:info@visioneng.com.br)



FM 557119

Vision Engineering Ltd. has been certified for the quality management system ISO 9001:2015 and calibration accreditation ISO 17025:2017.