

# **JBC**

[www.jbctools.com](http://www.jbctools.com)

## **INSTRUCTION MANUAL**



## **SF280**

Auto Solder-Wire Handle

This manual corresponds to the following references:

**SF280-A**

## Packing List

The following items are included:



**Auto Solder-Wire Handle** ..... 1 unit



**Manual** ..... 1 unit  
Ref. 0028093

## Connections

SF Auto Solder Wire Feeder Unit\*

Auto Solder-Wire Handle  
Ref. SF280-A



GSF  
Guide Kits\*  
*available for  
different solder  
wire diameters*

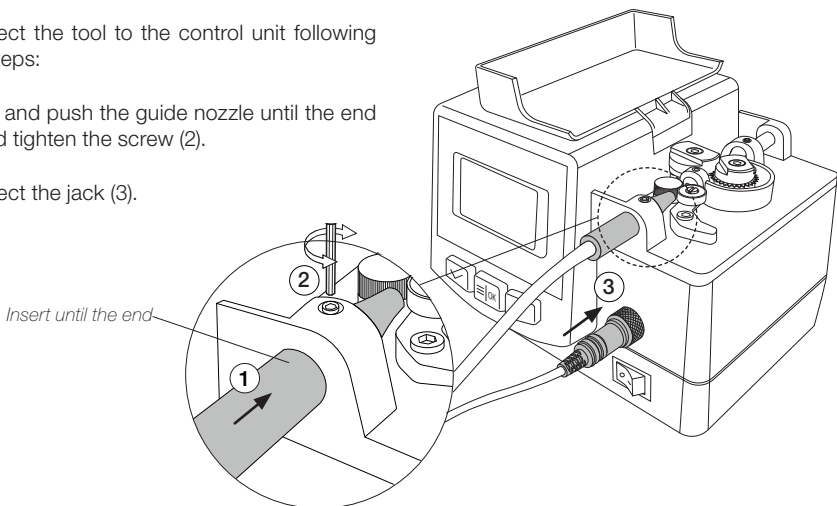


## Tool Assembly

Connect the tool to the control unit following this steps:

Insert and push the guide nozzle until the end (1) and tighten the screw (2).

Connect the jack (3).



\* not included, sold separately

# Guide Tube\* Replacement

Once the tool is disconnected from the control unit follow the instructions below:

Disassemble the outlet nozzle (1) from the guide tube.

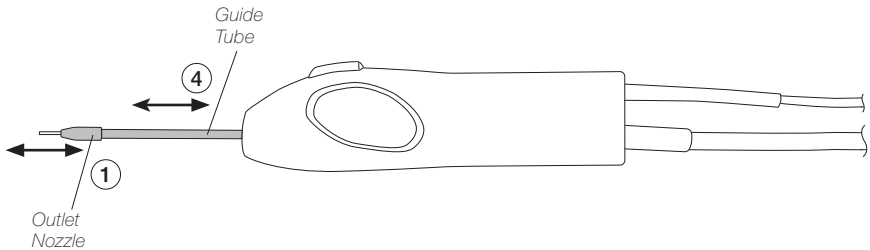
Open the guide clamp (2), take off the guide tube (3) and insert the new one.

**Note:** The guide tube length can be easily adjusted (4) when the guide clamp knob (2) is open.

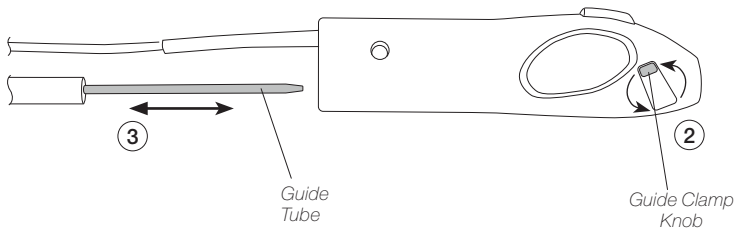
Once the guide tube length is adjusted close the guide clamp knob (2).

Assemble the outlet nozzle (1) onto the guide tube tip.

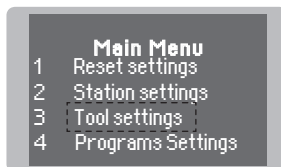
## SF with Guide Tube assembled



## SF without Guide Tube assembled



Enter en "Tool Settings" at the SF control unit main menu and select the proper wire diameter.



\* not included, sold separately

## Accessories\*

### Guide Kits\*

Various guide kits are available.

Choose the guide set according to solder wire diameter used.



Solder Wire Ø	Ref. <b>with</b> Solder Wire Perforation	Solder Wire Ø	Ref. <b>without</b> Solder Wire Perforation
-	-	0.4 mm / 0.016 in	GSF04D-B
-	-	0.5 mm / 0.020 in	GSF05D-B
-	-	0.6 mm / 0.025 in	GSF06D-B
0.8 mm / 0.032 in	GSF08V-B	0.7 - 0.8 mm / 0.028 - 0.032 in	GSF08D-B
1.0 mm / 0.040 in	GSF10V-B	0.9 - 1.0 mm / 0.035 - 0.040 in	GSF10D-B
1.2 mm / 0.047 in	GSF12V-B	1.1 - 1.2 mm / 0.043 - 0.047 in	GSF12D-B
1.5 mm / 0.059 in	GSF15V-B	1.3 - 1.5 mm / 0.051 - 0.059 in	GSF15D-B
1.6 mm / 0.063 in	GSF16V-B	1.6 mm / 0.063 in	GSF16D-B

### Tool Stand\*

#### Stand for SF280 Auto Solder-Wire Handle

Ref. SF-SE

It prevents SF280 Solder Feed Handle from rolling away while working.



\* not included, sold separately





# Specifications

## SF280

### Auto Solder-Wire Handle

Ref.: SF280-A

- Suits for the following solder wire Ø:

- Using Guide Sets with V-Cut: Ø 0.8 - 1.6 mm / Ø 0.03 - 0.06 in (see page 5)

- Using Guide Sets without V-Cut: Ø 0,4 - 1,6 mm / Ø 0.02 - 0.06 in (see page 5)

- Total Net Weight: 60 gr / 0.01 lb

- Total Package Dimensions/Weight: 235 x 40 x 40 mm / 170 g

(L x W x H) 9.25 x 1.57 x 1.57 in / 0.37 lb

Complies with CE standards

ESD safe

# JBC

## Warranty

JBC's 2 year warranty covers this equipment against all manufacturing defects, including the replacement of defective parts and labour.

Warranty does not cover product wear or misuse.

In order for the warranty to be valid, equipment must be returned, postage paid, to the dealer where it was purchased.



This product should not be thrown in the garbage.

In accordance with the European directive 2012/19/EU, electronic equipment at the end of its life must be collected and returned to an authorized recycling facility.



[www.jbctools.com](http://www.jbctools.com)

0028098-310522