



**INTEGRATED  
SERVICES**

[www.isc4esaindia.com](http://www.isc4esaindia.com)

## **INTEGRATED SERVICES & CONSULTANCY**

**Experienced, Reliable and Resourceful TMI Solution Provider**



**AC Sources, DC Power Supplies, DAQs, AC/DC E-Loads**

**Battery Meters, Multi-function Programmable DSOs**

**Bi-Directional Regenerative Power Supplies**

**Hot Air Stations, Protocol Analyzers, Electrical Safety Testers**

**Spectrum Analysers, Logic Analyzers, MSOs**

**Soldering Stations, Power Quality Analyzer**

**EVSE Testers, Battery Testers, Stereo Microscopes**

**EMC/EMI Pre-Compliance, LCR Meters**

**Grid Simulator, Thermal Imager, BGA Rework Station**

**Integrated Services and Consultancy (ISC)**, an ESA Group Company, is a leading provider of electronic test and measuring instruments since 1993. ISC, a premier distributor partner of Good Will Instrument, GW INSTEK, has been providing high precision electrical Test & Measuring Instruments with optimal TCO - Total Cost of Ownership. Our testing solutions help engineers expertly keep pace with disruption and succeed with innovation in fast growing sectors as in Automotive, IIoT, Semiconductor, Power and many others.

### DC POWER SUPPLIES



**GSM-20H10**  
Precision source measure unit  
4 quadrant operation of  
210V/±1.05A/22W



**PSW-Multi Series**  
Dual-channel/Triple-channel  
programmable switching  
DC power supply



**GPP-3060/6030/3650**  
Triple-Channel Programmable  
DC Power Supply



**PSU-Series**  
Programmable Switching  
DC Power Supply

### GDS - 3000A Series

650/350MHz 2/4 Channel DSO, 16 Channel Logic Analyzer

One Oscilloscope with Time Domain, Frequency Domain and Power Measurement

*Sample Rate: 5GSa/s; Memory Depth: 200Mpts/CH*



**MADE TO MEASURE:** GWINSTEK high performance test solutions includes over 300 products across five keylines—Oscilloscopes, Spectrum Analyzers, Signal Sources, AC / DC Power Supplies, DC Electronic Loads, Digital Multimeters, LCR Meters, Safety Testers, Other Meters, and Accessories.



**GPT-15000 Series**  
AC/DC/IR/GB Intelligent  
Safety Analyzer  
Analyze Your Safety Tests



**LCR-8200 Series**  
High-Frequency LCR Meter  
The Smarter Way to  
Characterize Component



**AEL-5000/PEL-5000 Series**  
Programmable  
AC/DC Electronic Load  
High Current Capacity with  
High Resolution



**ASR-3000 Series**  
High Performance  
Programmable AC/DC  
Power source



**MFG-2000 Series**  
Multi-Channel Function  
Generator



**GLC 10000**  
Leakage Current Tester



**GDM-906X Series**  
Dual Measurement Multimeter  
Measurement Explores—Insight  
and Efficiency



**GPM-8330/8320**  
Digital Power Meter  
Industrial Three-Phase AC Power  
Measurement

# LATEST PRODUCTS

## GBM-3000 Series

Battery Meter



Voltage (1000/300/80V) & Internal resistance (0mΩ~3.2kΩ), Resolution: 10μV and 0.1μΩ, Speed 60 time/s

## ASR-6000 Series

High Performance AC/DC Power Source



ASR-6000 Series AC/DC 4.5kVA/KW to 24kV/KW Single/Three Phase, 10 Perfect Output Modes Dual Current Convergence

## PSW-Multi Series

two-channel/three-channel programmable switching DC power supply



720W Dual channel and 1080W Triple channel, Multiple Voltage Combination (30V/40V/80V/160V)

## AEL-5000/PEL-5000 Series

Programmable AC/DC Electronic Load



Built-in tests for Battery Discharge, BMS, Short circuit, OCP, OPP test modes

## PHU-Series

Multi-range High power SC Source



Voltage Output: 80V/200V/500V/750V/1000V/1500V  
Power Output : 5kW/10kW/15kW  
Maximum Current Output : 510A

## MPO-2000 Series

Multi-function Programmable Oscilloscope



DSO, Spectrum analyzer, Arbitrary waveform generator  
Digital multimeter, DC power supply



Power (kW)	12kW	25kW	37kW
Voltage (V)	Maximum Current (A)		
600	50	100	150
1500	–	50	50
2000	–	50	50

\*Global pricing for base units without options, Incoterms Ex Works (EXW) San Diego, California, USA.

## High Performance, Modular Bidirectional, Regenerative Programmable DC Power System

- Full DC source and sink capabilities with power levels from 12 kW up to 37 kW
- Fully scalable up to 1.2 MW with parallel systems
- Available voltage ranges of 600V, 1,500V and 2,000VDC in a 4U rack chassis providing full power up to +/-150A within a single system.

The Mi-BEAM Series is designed for testing today's complex, high power electronics for the automotive, energy storage, industrial, and aerospace markets in a variety of applications. This platform covers all test needs through the product life cycle from advance research and development (R&D), to design validation, and production test requirements.



## High Performance Programmable AC / DC Power Source



### Asterion AC Series Advanced Features

- High power density in 1U / 2U / 4U / 14U chassis up to 18kVA
- Auto paralleling for higher power
- Voltage: 0-400VAC/0- 500VDC, Current: 0-60Arms/phase, Power: 500VA - 36000VA
- Complete avionic test suites (optional)
- Standard LXI LAN, USB and RS232, optional GPIB

### Asterion AC Series Advanced Features

- Commercial and military avionics test
- AC power simulation
- Frequency & voltage conversion
- IEC standards testing



## High Performance Solar Array Simulation Power Supply

- ▶ 2 independent, isolated 600W channels or 1 1200W channel in 1U
- ▶ Voltage: 40 V to 220 V
- ▶ Current: 2.72A to 20A
- ▶ 2μ second shunt switching recovery
- ▶ Peak Power Tracking
- ▶ Primary and secondary over voltage and over current
- ▶ Output electronic circuit breaker
- ▶ Built in fault data recorder
- ▶ Power On Self-Test
- ▶ Active power factor correction (PFC)
- ▶ Color touch panel monitoring
- ▶ Standard LAN interface
- ▶ Full remote control via AMETEK SAS software or SCPI commands



Example of a fully integrated Solar Array Simulator

30 channel  
600W/ch  
18KW total



## SEQUOIA SERIES

**California Instruments™**

### PRECISION PROGRAMMABLE REGENERATIVE GRID SIMULATORS FEATURES AND CAPABILITIES

- ▶ 0 - 333VAC, 0 - 3000A / PHASE 15KVA - 1.08MVA
- ▶ Single Solution for: AC/DC Programmable Power Source, AC/DC Grid Simulator, AC/DC Resistive or Complex Electronic Load
- ▶ Dual Voltage ranges that support over voltage testing on 480V based systems
- ▶ 500uS time resolution for Transients
- ▶ Virtual Panels control software included
- ▶ Non-Linear current waveform programming during Load mode
- ▶ Phase coordination among multiple units (LKM/LKS)
- ▶ Powerful set of analog controls for PHIL and Modulation tests
- ▶ Trigger In & Out to permit extensive coordination with external systems
- ▶ Extensive Onboard diagnostics
- ▶ Digital I/O, including RS232, USB, Ethernet (GPIB optional)
- ▶ Auto-parallelism for maximum flexibility with multi-chassis configurations



## SBT300/60

## Battery Tester



- Highest Measurement Accuracy:
  - Voltage: +0.01% of reading +3digits,
  - Resistance: +0.4% of reading +5digits
- High Resolution Display: Voltage up to 10V, Resistance up to 0.1 ul
- AC 4 terminal Testing Method
- Wide Resistance Range: 3m0~30000
- Voltage Measurement up to 300V (SBT300), 60V (SBT60)
- 10ms response time + 20ms sampling time
- Storage Function, Comparator Function, Comprehensive Judgement Results Output,
- Two setting methods, Manual comparison, Four Kinds of Beeping, Static Function,
- Correction Function, Analog Output Function

## SPA7000

## Power Analysis Wavecorder



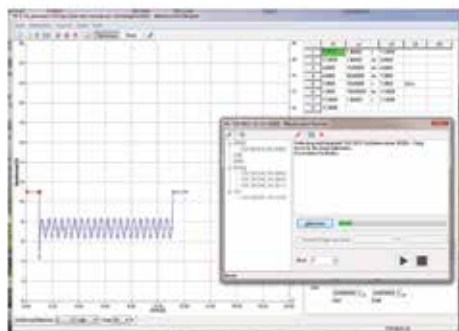
- Highest Measurement Accuracy: t(0.01% of reading + 0.02% of range)
- Bandwidth: DC, 0.1Hz-5MHz
- 7 Power Channels + 2 Motor Channels
- Various Plug-and-Play Capability Modules for Multiple Input Ranges and Accuracies
- Simultaneous and Independent Analysis of 7-harmonic channels
- Harmonic Analysis up to 500th Order
- Instantaneous Power Measurement
- X-Y Graph Display
- Data Update Rate up to 10ms
- Performing Playback and Analysis
- Mass Storage 512GB(1TB Optional)

## DC and Arbitrary Power Supplies Arbitrary & Function Generators 4-Quadrant and Broadband Amplifiers Special Instruments

### Comprehensive Test Bench For Automotive Testing

TOELLNER offers flexible solutions for on-board network simulation and testing of components, e.g. for the automotive and avionics industries. The Software WaveControl provides waveforms and controls the TOELLNER system components at the test station, which can be individually tailored to your requirements. Using a DAQ-Card, any signal waveform can be provided with Arbitrary Power Supplies or 4-Quadrant Amplifiers with outputs from 160 W to 5200 W. For fast interruptions, TOELLNER offers electronic switches with switching times below 500 ns.

**WaveControl Software includes a comprehensive library of waveforms supporting these standardized automotive industry tests:**



The Software WaveControl provides

- ✓ Extensive Waveform Libraries for Normative Tests, e.g.
  - LV 124, LV 148
  - VDA 320
  - VW 80000-1
  - VW 82148
  - GMW 3172
  - MBN 10615
  - ISO 16750-2
  - BMW GS 95024-2-1
  - BMW GS 95026
- ✓ Import & Export of recorded Data
- ✓ Visual Generation of individual Waveforms
- ✓ Sequence Controlling and Timing

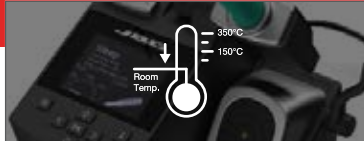


- Electronic Switch for short interruptions up to 60V / 100A; tr / tf < 500 ns
- 4-Quadrant-Power-Supply up to  $\pm 100$  V /  $\pm 40$ A; > 100 kHz, 320W / 1kW, modularly expandable up to 6,4 kW / 20 kW
- Arbitrary Power Supply up to 100 V / 320 A, AC-superimposition up to 70 kHz, 320 W / 1 kW up to 5.2 kW / 16 kW
- Software to create arbitrary waveforms, an extensive library of normative waveforms included
- All instruments can also be used individually



## HEATING SYSTEM

JBC provides the Most Efficient Soldering System which leads to quality improvement & an efficiency increase.



## HEAT MANAGEMENT

Thanks to both Sleep & Hibernation Modes, tip life increase exponentially.

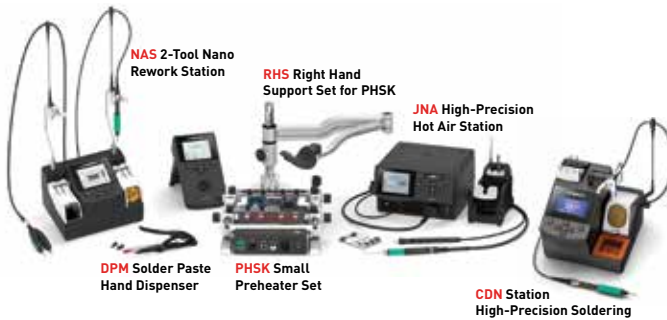


## INCREASE PRODUCTIVITY

Use Quick Cartridge Extractor to change quickly & safely without switching the station off.

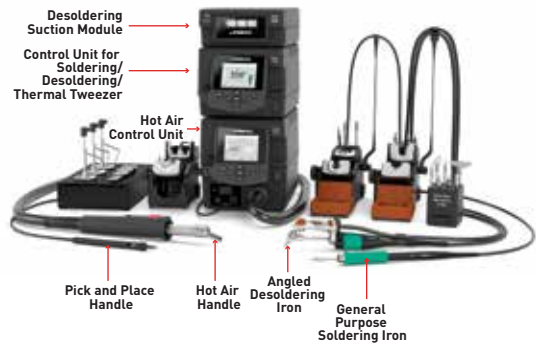
High Precision

## NANO REWORK SOLUTIONS



High Power

## RMSD COMPLETE REWORK STATION



### SMD Rework System

The ideal solution for your entire rework tasks. Includes Hot Air Station, Preheater with PCB Support, and Rework Arm.

### JBC Preheater Range

For rework on multi-layered PCBAs and/or large ground planes in order to avoid thermal shock and facilitate soldering as well as desoldering processes.

### ADJUSTABLE TWEEZERS RANGE

Provide the highest precision when soldering or reworking SMD components.



Preheaters



Fume Extractors



Tip Cleaners



Auto Feeder



Wire Stripper



Automation



## PDR- PIONEERS OF FOCUSED IR TECHNOLOGY

### BGA/SMD Rework Station

PDR designs, manufactures, and distributes IR Rework Stations, Industrial X-Ray Inspections Systems, and IR Thermal Test equipment for the electronics component and PCB assembly industry.

At the forefront of SMD rework technologies, PDR are working with many of the world's top names in:

- Electronic Manufacturing
- Defence
- Medical
- Automotive
- Research & Development



### PDR IR-A3

#### SEMI-AUTOMATIC ASSISTED REWORK

- Advanced Focused IR component heating
- Automatic Component Removal and Placement
- Quartz IR PCB preheating with 3 zones
- 2" Split Beam prism system for simultaneous PCB/component viewing
- Precision Components Pick and Placement up to 5um
- Precision PCB handling
- Component Nest/Flux Application Facility
- Closed Loop Non-Contact Temperature Sensing
- Advanced Automatic Thermal Process Control
- Reflow Process Observation Camera
- PCB Forced Air Cooling

### FOCUSED INFRARED

What you see you heat.  
No collateral damage.  
Instantaneous control.



### PLACEMENT TECHNOLOGY

Our placement technology  
allows every operator to achieve  
the same standard of quality.



### INTELLIGENT SOFTWARE

One profile to rework nearly all  
applications.





# EVSE Testing Solutions

BIS Standards Compliance



## Sonel BT-120

Battery tester

### ► Application

Diagnostics of battery packs or battery cells the life of electric cars.



## Sonel MPI-540

The MPI series comprises multifunctional electrical parameter meters designed for checking domestic and industrial system



## Sonel EVSE-100

Multifunctional Analyser for AC Vehicle Charging Stations

### ► B Standards Compliance

- Simulation of Charging Modes, Communication, PP Cable Parameters and CP Circuit Faults
- BIS and IEC standards, including is 17017-1, IS 17017-2-2, IEC 61851-1, and IEC 62196



## EVSE-01 Adapter

The adapter for the MPI series meters allows measurements of AC charging stations with a type 2 connector, with a socket and a fixed charging cable. Tests are available for 1-and 3-phase stations-both with and without ventilation



## PQM Series-PQM 750

Advanced meters for monitoring voltage stability, harmonics, and power disturbances in electrical grids and EV charging stations

### ► BIS Standards Compliance

- IS 17017-21:2019-Defines power quality requirements for EV charging stations
- IS 13234-1992 - Covers power quality and harmonic limits in electrical networks
- IEC 61000-4-30-Used for power quality measurements (Class A & Class S devices)



## MIC-15K1

Insulation Quality Analyzer Insulation resistance measurement ensuring safety in EV chargers, transformers, and switchgear

### ► BIS Standards Compliance

- IS 2993:1998-Covers insulation resistance testers' specifications
- IS 7322019-Electrical wiring regulations, including insulation resistance requirements
- IS 9000 (Part 3, Section 5) Covers insulation resistance tests for electrical components

# Measurement Instruments

## Electrical Diagnostics and Safety Testing

Sonel Instruments specializes in providing measuring instruments and equipment primarily for electrical testing, including insulation testers, multimeters, earth resistance testers, and power quality analyzers. These instruments are essential for evaluating the electrical systems in vehicles, ensuring they are functioning correctly and safely.

**MULTI-FUNCTION  
METER**



**INSULATION  
RESISTANCE METER**



**EARTH RESISTANCE &  
RESISTIVITY METERS**



**POWER QUALITY  
ANALYZER**



**FAULT LOOP  
IMPEDANCE METER**



**RCD METER**



**PAT - TESTER**



**MICRO OHM METER**



**THERMAL IMAGER  
CAMARA**



**CORONA CAMERA**



**CABLE LOCATORS**



**PHOTOVOLTAIC METERS**



**VOLTAGE & PHASE  
ROTATION TESTER**



**MULTIMETER &  
CLAMP METER**



**LUX-METER**



**HIPOT / VLF**



## OPTICAL INSPECTION SYSTEMS

### Eyepiece-less Stereo 3D Microscopes

#### MANTIS



3 - 15x  
Magnification

Ergonomic  
Working

Digital  
Image Capture



5MP image  
quality



Long working  
distance



Ergonomic  
position



3D view



Overlay & Image  
comparison



Import,  
export settings



Glasses free



Outstanding  
image quality



3D  
illumination

#### LYNX EVO



2.7 - 240x  
Magnification

Easy  
Viewing

HD  
Image Capture



360°  
viewer



WiFi



focus stacking



high precision stage

## DIGITAL INSPECTION SYSTEMS

### 2D Digital Inspection Systems

#### EVO Cam HALO



0.8x - 192x  
Magnification

Auto  
lens ID

Auto  
focus

Measurement  
& Analytics

360 viewer  
compatible

#### EVO CAM II



0.8 - 750x  
Magnification

Large  
Field of View

PC  
control option

#### VE CAM



Wi-Fi  
Screen sharing

Wide  
Field of View

Touch screen  
Compatible

## DIGITAL INSPECTION SYSTEMS

### 3D Digital Inspection Systems

#### DRV-Z1



6.1 - 93x  
Magnification

Easy 3D  
Digital View

Share  
Live 3D View



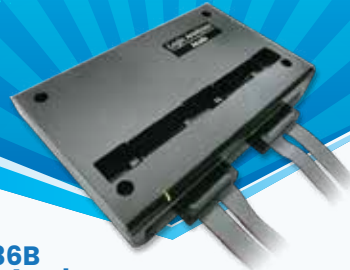


## MSO3124V Mixed Signal Oscilloscope

MSO3000 Mixed Signal Oscilloscope

- DSO: 4 Channels, 1 GS/s S/R, 200 MHz bandwidth
- Logic / Protocol Analyzer: 16 Channels, 2 GS/s Timing Analysis, 250 MHz State Analysis
- Data Logger (HDD / SSD Storage)
- Total Memory: 4 Gb
- Digital Voltmeter: 3 digits
- Frequency Counter: 5 digits

6-in-1 Instruments: DAQ, DSO, DVM, Frequency Counter, Logic Analyzer, Protocol Analyzer



## LA4136B Logic Analyzer

LA4000 Logic Analyzer

- 136 channels
- 4GHz Timing Analysis / 400MHz State Analysis
- 32Gb Memory
- Logic, State and Protocol triggers
- Stackable with a DSO to form an MSO
- \*TravelBus, TravelLogic

Ideal for applications requiring high-speed timing analysis or dealing with complex state analysis



## BF7264 Pro Protocol Analyzer

BusFinder Protocol Analyzer

- Real-time data display, post-capture waveform
- Trigger for commands or data
- 64 channels Logic Analyzer
- 32Gb total memory Protocol Analyzer
- Protocol Option: eDP1.4a, eMMC 5.1, MIPI D-PHY 1.2, NAND Flash, SD 3.0(SDIO 3.0), SD 4.1 (UHS-II), SGMII, UFS2.1



## TS3124V DSO

TravelScope DSO

- Record length: 128Mpts/ch
- Channel: 4
- Sample rate: 1 GS/s
- Bandwidth: 200 MHz
- Data Logger (HDD / SSD Storage)
- Digital Voltmeter: 3 digits
- Frequency Counter: 5 digits

## PROTOCOL ANALYZER

BiSS-C	CAN2.0B/CAN FD	I2S	LIN2.2
DALI	DP_Aux	MDIO	MII
eSPI	HID over I2C	MIPI I3C 1.1	MIPI RFFE 3
I2C		Modbus	

PMBus  
PWM  
RMII  
RS-482

Profibus  
RGMII  
RS-232

SMBus	SPI
SVID	UART (RS232)
USB PD 3	USB1.1

## ETHERNET

10BASE-T1S, MII/RMII/RGMII/GMII/SGMII



- Runs battery pack endurance tests
- Includes 18 independent and isolated charge / discharge channels
- Extendable number of channels
- Each channel can run the CV, CC, CR and CP charging and discharging tests
  - Adjustable voltage output from 0V to 7V with a resolution of 1mV
  - Current sourcing capability of 1A
  - Controlled electrical load adjustable from 4  $\Omega$  to 7k  $\Omega$  per channel
  - Includes high precision voltage and current measurement loggers

### **BATTERY CYCLER**



- Battery Cell Simulator Rack scales to 256 Channels/Isolated Cells
- 180 Cells Rack Mount with a 10\*18 Cell Modules for BMS Testing
- Adjustable output V per cell - 0 V to 7 V with 1.0 mV precision
- NTC and Fault simulation tests also with short circuit, open circuit and reverse voltage fault tests
- V/I Measurements for each cell
  - V with a precision of 0.4 mV
  - High I with a precision of 1 mA
  - Low I with a precision of 5  $\mu$ A
- Controllable by CAN ISO 11898-2, Ethernet TCP and USB-C

### **Battery Cell Simulation Rack**



- Supports the complete BMS Validation Process - DV, PV, LTT and EOL FCT
- Automotive Load Box designed for BMS Testing without complex wiring setup
- Offers CAN, LIN, Analog inputs, Digital I/O channels, Counters, PWM for BMS/CSC Signals
- Simulates the specific signals for BMS with fault simulation
- Monitors and measures specific BMS signals

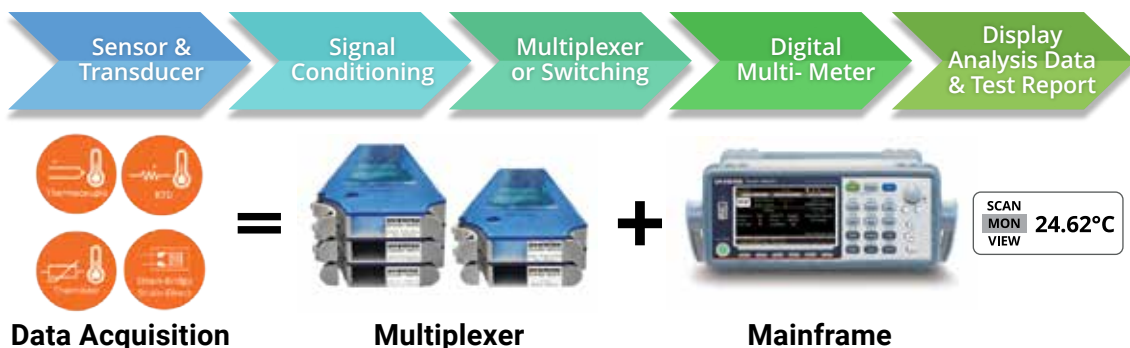
### **BMS Load Box**

## GWInstek Data Acquisition Systems



### FEATURES

- Large 4.3" TFT color display
- 3-slot mainframes with built-in 6 1/2 digit DMM
- Basic 0.0035% DCV accuracy
- 5 selectable switch modules
- Up to DC 600V / AC 400V voltage measurement (DAQ-909 module)
- Up to 450 channel/s scan rate
- Up to 100 kilo points internal memory
- Measures and converts 14 different input signals:
  - Temperature with thermocouple, RTDs and thermistor; dc/ac volts; 2- and 4-wire resistance; frequency and period; dc/ac current and capacitance; direct strain and bridge strain
- USB storage support to copy/log data in standalone operation
- Interface: Digit I/O, LAN, USB host/device and mini GPIB(optional)



	Thermocouple	RTD	Thermistor	AC Voltage	DC Voltage	AC Current	DC Current
<b>Range</b>	-200 °C to 1820 °C	-200 °C to 600 °C	80 °C to 150 °C	100mV to 300V	100mV to 600V	100µA to 2A	1µA to 24
<b>Resolution</b>	0.002 °C to 0.01 °C	0.002 °C	0.01 °C	0.1µV to 1mV	0.1µV to 1mV	1000A to 1µA	1PA to 1µA
<b>Accuracy</b>	0.2 °C	0.06 °C	0.01 °C	0.05%	0.0035%	0.10%	0.05%

	2W Resistance	4W Resistance	Capacitor	Frequency Period	Strain Bridge Strain Direct
<b>Range</b>	100 Ω to 1000 MΩ	100 Ω to 1000 MΩ	1nF to 100µF	3Hz to 300kHz	
<b>Resolution</b>	0.1 m2 to 1000 Ω	0.1 mo to 1000 Ω	0.0001nF to 0.01µF		
<b>Accuracy</b>	0.01%	0.01%	2%		



**INTEGRATED  
SERVICES**

[www.isc4esaindia.com](http://www.isc4esaindia.com)

**Soldering & BGA Rework Solutions, Dielectric Withstand Testing**

**Battery/Simulation, Battery Testing (Charge/Discharge)**

**Battery Internal Resistance & Battery Health Monitoring, BMS Testing**

**Electric Power Train Testing, LV 123 , LV 124/LV 148, ISO 16750-2**

**EMC EMI Pre Compliance Testing**

**Solar Power Simulation & Inverter Testing, Fuel Cell Testing**

**AC Grid Simulation, AC/DC Charging Station & OBC Testing**

**Power Quality Testing, Electrical Safety Testing, Thermal Imaging**

**CAN/CAN FD, 10 Base T1-S, I2C, RS-232/485, Modbus, Profibus, SMBus**

**Data Logging & Analysis, Optical & Digital Inspection**

#### **BANGALORE**

**Mr. Santanu Chatterjee**

**DGM-Sales**

**M: +91 97313 78934**

**T: 080-6764 8888 Ext:12**

**080-23126100/200**

**E(Sales): sales@isc4esaindia.com**

**E(Support): support@isc4esaindia.com  
service@isc4esaindia.com**

**Registered Office**

**"Embedded Home", #37, II Floor,  
36th Cross, II Block, Rajajinagar,  
Bengaluru-560010. Karnataka, India**

#### **CHENNAI**

**Mr. Senthil Kumar**

**Manager-Sales**

**No.109 /59A , Ground Floor,  
IV Avenue, Ashok Nagar,  
Chennai - 600 083  
Tamilnadu.**

**T: 044-24715750**

**M: +91 75500 76300**

**E: chennai@isc4esaindia.com**

#### **HYDERABAD**

**Mr. A V Gopalakrishna**

**Sr Engineer Sales-TMI**

**Manasa Apartments  
Flat Number 3, Plot No 533/3  
H. No 3-5-76/18, Vivekanandanagar  
Colony, Kukatpally,  
Hyderabad- 500 072.**

**M: +91 90082 96566**

**E: gopala.krishna@isc4esaindia.com**

#### **PUNE**

**Mr. Amol kadu**

**Sales Manager-TMI**

**Office No. 302, Vaidehi Saket  
Baner Pashan Link Road,  
Pashan, Pune  
Maharashtra - 411 021**

**M: +91 98450 44338**

**E: pune@isc4esaindia.com**

#### **KERALA**

**Mr. Krishnan Murugesan**

**Assistant Manager Sales**

**M: +91 75500 09116**

**E: krishnan.murugesan@isc4esaindia.com**

#### **KOLKATA**

**Mr. Arun Roy**

**Manager-Sales**

**M: +91 98305 78843**

**E: sales@isc4esaindia.com**

#### **VADODARA**

**Mr. Jaimin Shah**

**Application Engineer**

**M: +91 73488 51143**

**E: jaimin.shah@isc4esaindia.com**

#### **CORPORATE HEAD QUARTERS**

**#S 606, 6th floor, World Trade Center  
Brigade Gateway, 26/1, Dr. Rajkumar Rd,  
Malleshwaram(W), Bangalore-560055  
Karnataka, India**

**T: 080-6764 8888/36**

**F: 080-67648841**

**Acute**  
PC-based T&M Instruments

**AMETEK**  
PROGRAMMABLE POWER

**ART logics**  
EUROPE • SHANGHAI • SUZHOU

**GW INSTEK**

**JBC**

**PER REWORK**

**SUITA**

**TOELLNER**

**Vision**  
ENGINEERING